

**TRADEBALUSTRADE**



**PROFESSIONAL  
POST & RAIL SYSTEM**





## POST & RAIL

A highly customisable and dynamic balustrade system, compliant with building regulations and suitable in almost every situation and setting.

The modern combination of Stainless steel and glass system can be fitted internally and externally with uncompromising safety at its core.

- > 1100mm minimum system height as standard
- > 900mm minimum system height on stairs
- > Internal 304 or external 316 stainless steel
- > Supports 10mm - 11.5mm thick glass
- > up to 1200mm post centres

- > Fixes to brick, concrete, steel or wood
- > Base fix or side mounting options
- > Round 42.4mm or square 40mm available
- > Widely used style of balustrade system
- > Can be mirror polished or powder coated

## Stainless Steel

We stock a large number of standard height balustrade posts as well as offering bespoke fabrication on Post & Rail systems.

Handrails can also be cut to size and finished to your specifications.

## Glass

Working with multiple UK glaziers, we can produce glass in a range of styles, shapes, colours and finishes.

All of our glass is bespoke and cut to size for each order.

## ORDERING A **POST & RAIL** SYSTEM

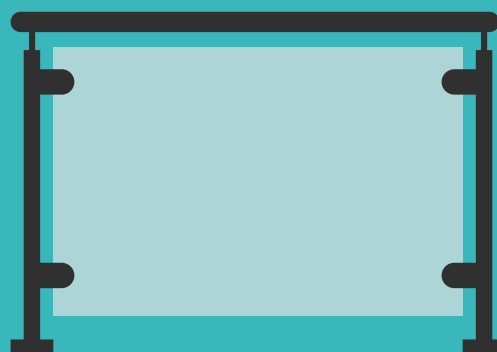
Using our online system builder, you can input your measurements to get an instant quotation sent straight to your email. Alternatively, contact us directly with your information and dimensions.

> [Tradebalustrade.co.uk](http://Tradebalustrade.co.uk)

> [hello@tradebalustrade.co.uk](mailto:hello@tradebalustrade.co.uk)

> (01908) 370 650

**Starting From  
£185 per Metre**



## COMPLETE POSTS



**Pro End Post**  
42.4mm Diameter  
1058mm Height



**Pro Mid Post**  
42.4mm Diameter  
1058mm Height



**ProCorner Post**  
42.4mm Diameter  
1058mm Height

## GLASS CLAMPS



**Round Back Clamps**  
for 10mm Glass



**Round Back Clamps**  
for 10.76mm Glass



**Flat Back Clamps**  
for 10mm Glass



**Flat Back Clamps**  
for 10.76mm Glass

## POST SADDLES



**Adjustable Straight Saddle**  
for 42.4mm Handrail



**Fixed Corner Saddle**  
for 42.4mm Handrail



**Adjustable Corner Saddle**  
for 42.4mm Handrail



**Cranked Handrail**  
for 42.4mm Handrail

## HANDRAIL TUBE



**Stainless Steel Tube**  
42.4mm Satin Finish

### STEEL FINISHES

All Stainless Steel products are available as Grade 304 (Indoor) or Grade 316 (Outdoor).



**Brushed Satin**



**Mirror Polished**

Suitable for coastal locations or public spaces with high usage.



HANDRAIL ACCESSORIES



In-Line Connector  
for 42.4mm Tube  
Fixed 180°



Adjustable Connector  
for 42.4mm Tube  
0 - 90°



90° Round Elbow  
for 42.4mm Tube



90° Square Elbow  
for 42.4mm Tube



Handrail Adapter  
for 42.4mm Tube



Discreet Wall Flange  
for 42.4mm Tube



Adjustable Wall Flange  
for 42.4mm Tube



Squared Wall Flange  
for 42.4mm Tube

RAIL END CAPS



Flat End Cap  
for 42.4mm Handrail



Semi-Domed End Cap  
for 42.4mm Handrail



Domed End Cap  
for 42.4mm Handrail

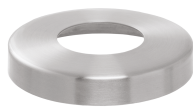


Scroll End Cap  
for 42.4mm Handrail

BASE PLATE



Weld On Base Plate  
for 42.4mm Tube



Base Plate Cover  
for 42.4mm Tube

FASCIA FIXINGS



Stainless Steel Tube  
42.4mm Satin Finish  
Cut to Size



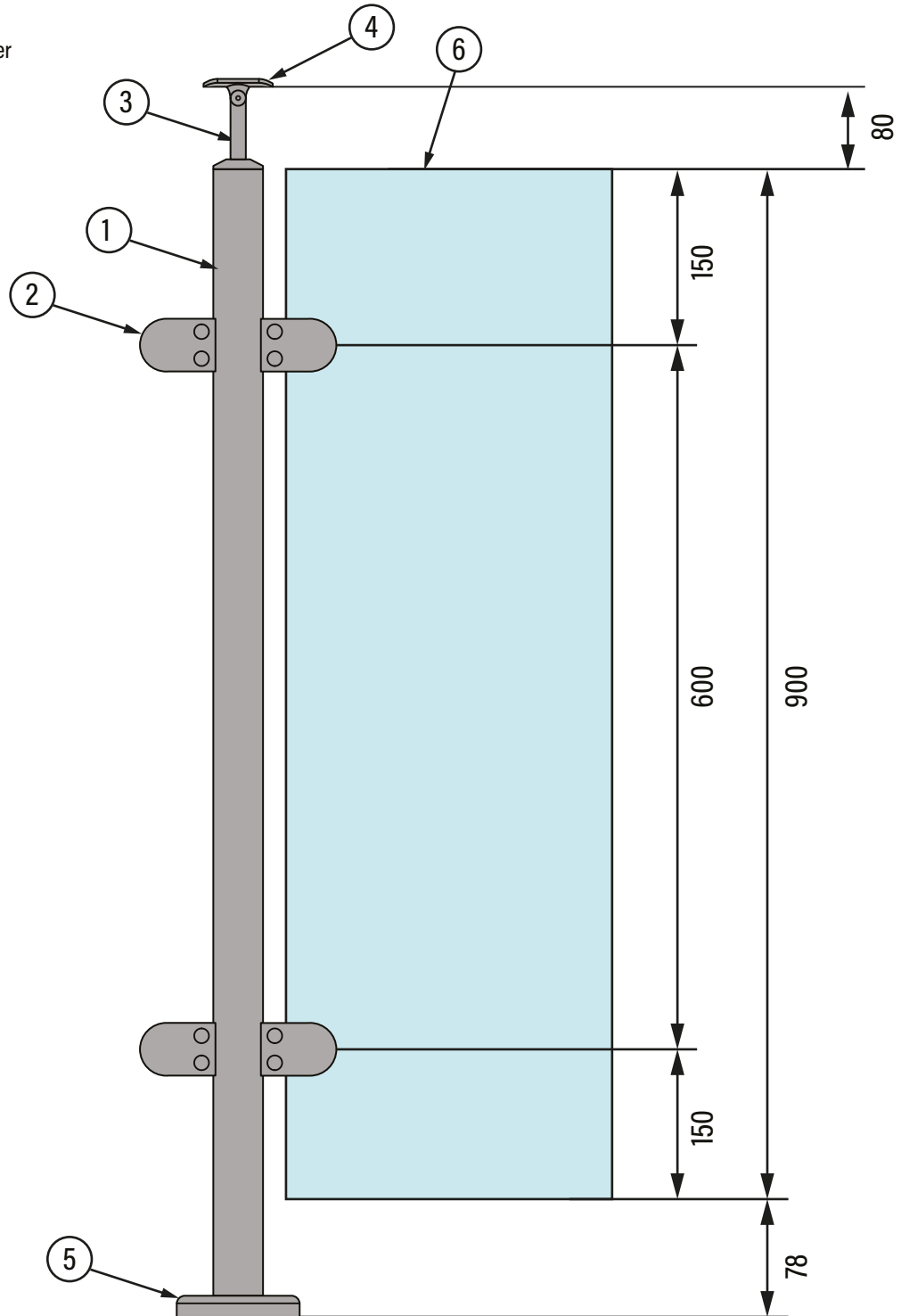
Stainless Steel Tube  
40mm² Satin Finish  
Cut to Size



Stainless Steel Tube  
40mm² Satin Finish  
Cut to Size

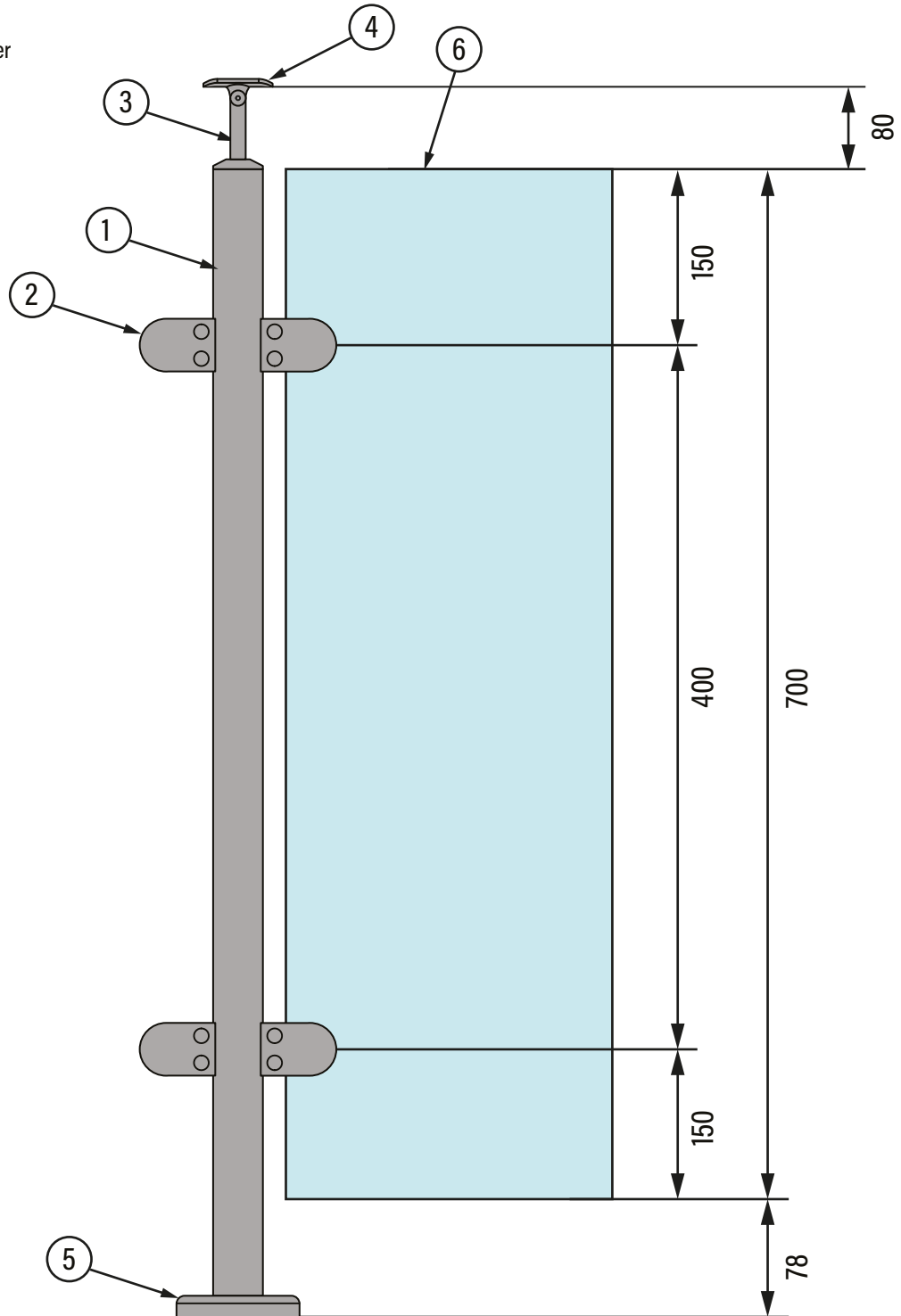
## Standard Post – 1058mm

- 1. Stainless Steel Pro Post,  $\varnothing$  42.4mm
- 2. Round Back Glas Clamp, Suits  
8mm - 12mm Glass
- 3. Stem
- 4. Angle Adjustable Saddle, Suits  
 $\varnothing$  42.4mm Handrail
- 5.  $\varnothing$  100mm Base Plate and  
 $\varnothing$  105mm Base Plate Cover
- 6. Toughened Glass Panel



## Stair Post – 858mm

- 1. Stainless Steel Pro Post,  $\varnothing$  42.4mm
- 2. Round Back Glas Clamp, Suits  
8mm - 12mm Glass
- 3. Stem
- 4. Angle Adjustable Saddle, Suits  
 $\varnothing$  42.4mm Handrail
- 5.  $\varnothing$  100mm Base Plate and  
 $\varnothing$  105mm Base Plate Cover
- 6. Toughened Glass Panel



## Surface

No matter what style system you're using, installing to a solid foundation is essential.

We recommend a minimum fixing depth of 100mm for the Post & Rail system.

If you are unsure about the substrate you are fixing to, contact a local builder or a structural engineer before ordering or starting work.

## Fixing

Fixing bolts are not supplied with systems, we recommend the following:

<b>Steel</b>	M10 Bolt Through / Drill & Tap
<b>Brick or Concrete</b>	M10 Anchor Bolt / Thunder Bolt or Threaded Bar & Resin
<b>Wood</b>	M10 Coach Screws / Bolts

\*These fixtures are provided as a guide and not suitable for every application

## Installation

1. Place all posts in the desired position, giving at least a 100mm gap from any ledges.
2. Mark your fixing holes with a pen or pencil.
3. Drill the marked holes and secure all posts. Use at least 2 of the 4 fixing holes found on each of the base plates.
4. Remove the fronts of your glass clamps, ready for placing the glass.
5. Place an 80mm high wooden block between the posts to support glass when installing.
6. With one person holding the glass in place, the other can now begin to fix the clamp covers back on and secure each panel.

**Note:** Do not use power tools to tighten glass clamps or covers.

## Install Tips

Posts should be installed at a maximum of 1200mm post centres.

When installing on stairs, always place posts at the front edge of the step.

To stop glass slipping, wash your glass clamp rubbers in warm soapy water before installing.

## System Heights

Use the following system heights as a guide for minimum building regulation heights.

<b>Residential, Internal</b>	1000mm
<b>Residential, External</b>	1100mm
<b>Residential, Staircases</b>	900mm
<b>Commercial, Internal</b>	1100mm
<b>Commercial, External</b>	1100mm
<b>Commercial, Staircases</b>	900mm

## Finished Floor Level

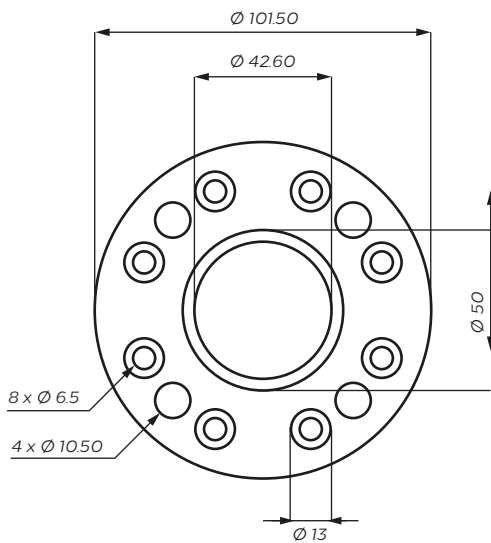
All system heights should be taken from the finished floor level (FFL).

If there are any raised sections in front of the system, (walls, ledges, lights, railings, kick plates etc) that allow a person to stand at a higher level, this would become the new finished floor level.

If you are installing before laying tiles, flooring or decking, you will need to add the height of these finishings to the glass height.



## Posts



### Concrete & Brick w/ M10 Anchor Bolts

1. Drill 8mm pilot holes to a depth of 100mm.
2. Insert 100mm M10 stainless steel floor anchors
3. Hand tighten to secure

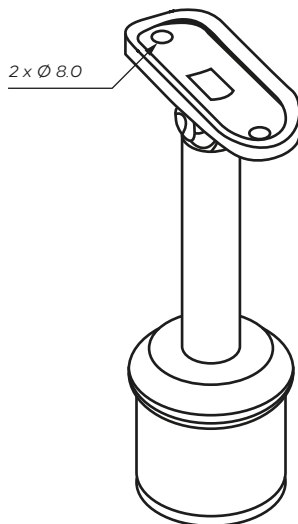
### Metal w/ M10 Steel Bolts

1. Drill and tap M10 fixing holes in the metal substrate
2. Fix using 50mm M10 steel bolts with locking washers
3. Hand tighten to secure

### Wood w/ M10 Coach Screws

1. Drill 6mm pilot holes to a depth of 100mm
2. Insert 100mm M10 stainless steel coach screws
3. Hand tighten to secure

## Handrail



Place the handrail on the saddles where you would like the handrail to be fixed

1. Mark the saddle holes with a pen and then remove the handrail.
2. Drill and tap the fixing holes you have marked with the provided drill and tap kit.
3. Place the handrail back on the saddles, fixing the handrail to the saddles with the provided M5 screws.
- 4.

## Still Unsure?

Visit our website for installation videos or talk to one of our specialists today.

(01908) 370 650  
hello@tradebalustrade.co.uk

## Ready for a Quote?

To get an instant price with our online system builder or email us your plans.

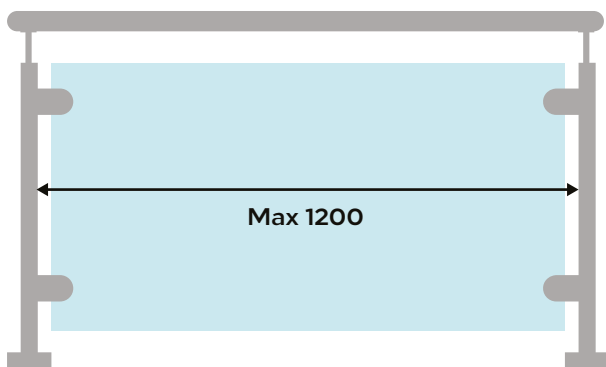
[www.tradebalustrade.co.uk/design-quotes@tradebalustrade.co.uk](http://www.tradebalustrade.co.uk/design-quotes@tradebalustrade.co.uk)

## Submitting Sizes

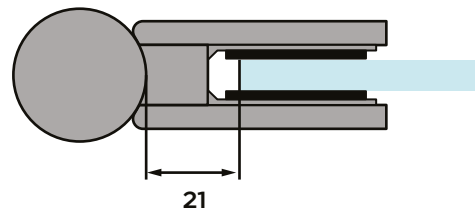
When submitting glass sizes, please ensure you have provided accurate measurements for each panel, with holes, cut outs, angles, shapes and deductions made in advance.

We will not make any deductions from the sizes you submit.

1. Measure inside post to inside post distance.



2. Deduct 21mm from each side



## Deductions

For our Post & Rail balustrade system, the only deduction you will need to make will be the one which is displayed above.

Glass panel height for the Post & Rail system is 900mm as standard.

Custom fabricated posts or systems will also need panel heights calculated. If you are unsure on how to do this, contact one of our team.

## Angled Glass

If your system requires angled glass, you can download an angled glass measurement form from our website. This form shows all the angles and measurements we need to produce your glass.

Glass order forms can be downloaded at [tradebalustrade.co.uk/support](http://tradebalustrade.co.uk/support)

## Still Unsure?

Get in touch with one of our specialists today for help measuring glass.

(01908) 370 650  
[hello@tradebalustrade.co.uk](mailto:hello@tradebalustrade.co.uk)

## Ready to Order?

Once you're happy with your glass sizes, email us your complete glass order form.

[glass@tradebalustrade.co.uk](mailto:glass@tradebalustrade.co.uk)

## Residential/Commercial

Our Pro system will meet building regulations on the majority of residential and commercial jobs when used at ground level or at height.

Unless specified in advance, we supply all Post & Rail systems with 10mm toughened glass.

Toughened glass will smash and shatter when compromised. This means the balustrade is no longer protecting any falls.



**Protection from falling,  
collision and impact**

APPROVED DOCUMENT

**K**

## Public Spaces

When installing in public spaces, it is your responsibility to ensure the balustrade will meet building regulations.

You should consult your building inspector to confirm any specific requirements before placing an order with us.

For further building regulations information, you can download the government document **Protection from falling, collision and impact: Approved Document K** from our website.

[tradebalustrade.co.uk/support](http://tradebalustrade.co.uk/support)

## Individual Testing

Get in touch with us in advance if you require individual system testing.

(01908) 370 650  
[hello@tradebalustrade.co.uk](mailto:hello@tradebalustrade.co.uk)

## Regulations Approval

When applicable, we always recommend getting approval from your local building control office before ordering.

### **Can I install the system myself?**

The majority of the system slots and glues together, although some drilling may be required.

### **How can I have the Steel Balustrade finished?**

Our stainless steel is comes as a brushed satin finish of Grade 316 steel. Mirror finish is also available and recommended for coastal locations. These finishes are achieved within the polishing process.

The 320 grit finish that we generally supply is one of the highest grades of finish available. It ensures the steel is as smooth as possible and therefore as durable as possible.

### **Do the systems meet Building Regulations?**

This depends on what style of system and glass you use. Some situations call for different requirements in order to pass building regulations. You should always check with your local building control office prior to placing an order if you are unsure.

### **What diameter are the steel posts and handrail?**

The stainless steel tubes has an outside diameters of 42.4mm

### **How high should my balustrade be?**

In accordance with UK Building Regulations they should be 1100mm high, but 900mm high on stairs.

### **What is the lead time?**

Lead times will vary, for current lead times give us a call and one of our team will be happy to help.

### **Do you supply infills?**

Yes, we have glass and wire rope infills available, please contact our team for further information.

### **What size should glass infills be?**

We fabricate glass to your requirements. For the Post & Rail balustrade system, glass panels should be no wider than 1200mm.

### **When should I instruct my installers to fit the system?**

Do not instruct installers/builders to install the balustrade until you have received and checked all parts of your order have been received and undamaged.

### **Is stainless steel suitable for outdoor use?**

Yes, all our systems can be used for indoor or outdoor use. When ordering let our team know what you'll be using the system for and we can ensure the correct grade of stainless steel.

### **Can you install the system for me?**

Yes, we can install throughout the UK. Contact us to get a quote for installation and book a site survey.

### **How is it delivered?**

All deliveries are sent out via 24 hour courier in most cases. Glass is sent out directly from the glazier.



## Why does 'Stainless' steel need maintaining?

Stainless steel is naturally resistant to corrosion. While needing no additional protection or coatings, it does require cleaning or wiping down from time to time to prevent dirt building up or finger marks showing.

The level of maintenance required depends on the situation and surrounding environment.

The following guidelines should assist giving you the best ways to clean your steel balustrade without compromising the natural corrosion proof qualities. For additional information, visit our website for further information on maintenance.

### How Often

Indoor residential systems should be cleaned once every 6 to 12 months, or sooner if signs of dirt begin to show.

Outdoor systems will usually be 'self-cleaning' to a certain extent, with rainwater washing off accumulated dirt and other coatings if the surfaces are sufficiently and freely exposed.

Systems exposed to harsh chemicals, exhaust fumes and salt from sea air should be cleaned as often as every 3 months.

### What to Use

For regular cleaning, we advise starting with warm soapy water and a cloth.

For removing brown pitting, cleaning agents containing phosphoric acid are suitable.

For scratches, a stainless steel cleaner may be required. Follow the instructions included.

### Technique

Brushed steel has a natural grain that will run either horizontally or vertically. For the best results, clean the steel in the same direction.

When water has been used in the cleaning or rinsing process, always wipe the surface dry to prevent watermarks forming. Using distilled water would also prevent marks forming.

Ensure the cloth or cleaning materials are clean to avoid cross contamination that may damage the steel.

### What Not to Use

Jewellery polish that contains chemicals corrosive to stainless steel.

Any product containing chloride or chlorine bleach.

Wire wool, steel brushes or abrasive scrubbing pads.

## Need any help or advice?

We're always available to help.  
Talk to one of our specialists today.

(01908) 370 650  
hello@tradebalustrade.co.uk

## Ready for a Quote?

To get an instant price with our online system builder or email us your plans.

[www.tradebalustrade.co.uk/design](http://www.tradebalustrade.co.uk/design)  
[quotes@tradebalustrade.co.uk](mailto:quotes@tradebalustrade.co.uk)



Site Survey & Drawings



Bespoke Manufacturing



Commercial



Residential



Building Regulations Compliant



Call our Specialists  
01908 370 650



Strength Test Certificates Available



Email Your Plans  
hello@tradebalustrade.co.uk

View our full range of systems and more at  
**Tradebalustrade.co.uk**

**Trade Balustrade**  
Unit 31, Wharfside  
Milton Keynes  
MK2 2AZ