



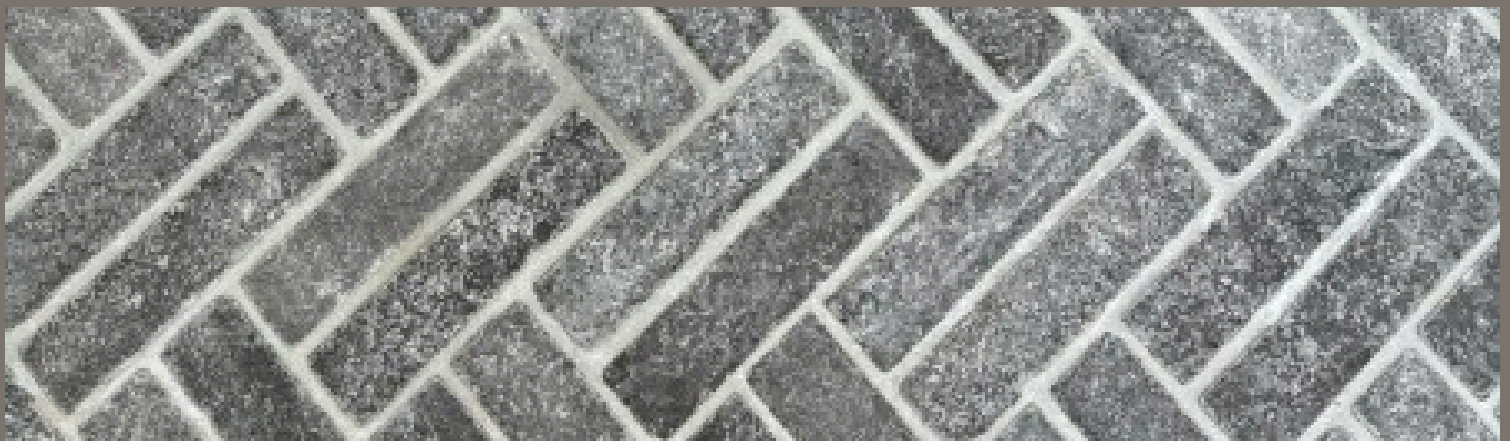
Meli Dark Grey Tumbled Pre-Sealed Limestone Slim-Setts

With these pre-Sealed Limestone Slim-Setts in your landscaping project, you really can choose the best of two worlds. For these tumbled setts are double sided.

Lay them with the flamed surface finish uppermost for a timelessly traditional look and feel. Or turn them the other way up to enjoy the intriguing markings of the acid etched surface.

As with any natural stone product, some of their charm comes from the fact that there are always little variations in colour and markings - even in the same batch. These Limestone Slim-Setts are no exception. You may see marks caused by iron and minerals within the stone which will most likely fade over time.

Why not team your setts with our Meli Dark Grey Paving & Meli Dark Grey Bullnosed Steps?



Product Information

200mm long x 50mm wide x 40mm deep.

Tolerance: +/- 3-5 mm on all axis's.

Side 1- Flamed Surface Finish with Tumbled Edges.

Side 2- Acid Washed Surface Finish with Tumbled Edges.

850 per crate @ 950kg.

8.5m² coverage per pack (approx)

Minimum 3-5mm joint width recommended.

Factory Pre-Sealed using a sacrificial water based breathable sealer to reduce water absorption.

Can be laid on either 50mm side or a mixture of both sides.

Normally available within 1-3 working days subject to stock levels at the time of ordering.

Flamed Side. Pendulum Test Value, 65 Dry, 45 Wet.

Acid Washed Side. Pendulum Test Value, 64 Dry, 50 Wet.

Disposal of all packaging/pallets is the responsibility of the customer.

Fissures in stone are a natural part of the stone and are not considered flaws or defects. You can just admire them for making your stone project unique.

Please note limestone dust residue could be present within the crates, once the products are laid the dust should be easily removed with water, hard brush/pressure washing application.

We suggest to order 10% for wastage.