

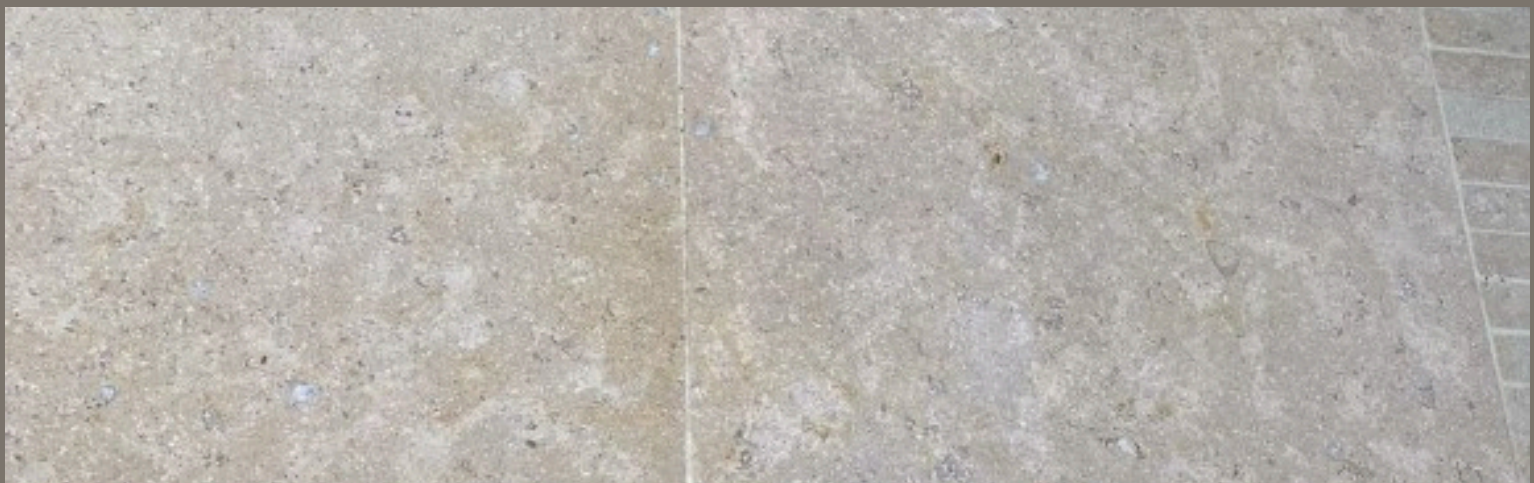


Sinai Pearl Beige Acid Washed Pre-Sealed Sawn Limestone Paving

Specify this beautiful natural limestone with sophisticated sawn edges, allowing you to specify natural stone with a more contemporary feel into garden designs.

Available in three alternative size with three finishes to select from:

- Brushed
- Sand-Blasted Brushed
- Sand-Blasted



Product Information

Option 1

- Acid Washed Surface with Sawn Edges
- 900 x 600 x 20mm
- 16.2m² /30 Slabs coverage per crate
- Approx weight 975kg per crate
- Factory Pre-Sealed using 2 coats of a sacrificial water-based breathable sealer to reduce water absorption
- Tolerances +-2-3mm along all axis's
- Pendulum Test Value, 62 Dry, 31 Wet

Option 2

- Acid Washed Surface with Sawn Edges
- 900 x 600 x 30mm
- 11.34m² /21 Slabs coverage per crate
- Approx weight 975kg per crate
- Factory Pre-Sealed using 2 coats of a sacrificial water based breathable sealer to reduce water absorption
- Tolerances +-2-3mm along all axis's
- Pendulum Test Value, 62 Dry, 31 Wet

Option 3

- Acid Washed Surface with Sawn Edges
- 600 x Free Lengths x 30mm
- 9.54m² coverage per crate
- Consisting of 16 x 600mm x 400mm x 30mm, 3 x 600mm x 600mm x 30mm, 3 x 600mm x 700mm x 30mm, 7 x 600mm x 800mm x 30mm.
- Approx weight 975kg per crate
- Factory Pre-Sealed using 2 coats of a sacrificial water based breathable sealer to reduce water absorption
- Tolerances +-2-3mm along all axis's
- Pendulum Test Value, 62 Dry, 31 Wet