



SolidWall[©]

Lightweight, recycled blocks for walls and water features

Are you a Landscaper, Builder, Architect or Garden Designer looking for a system that will benefit you and your client's jobs?

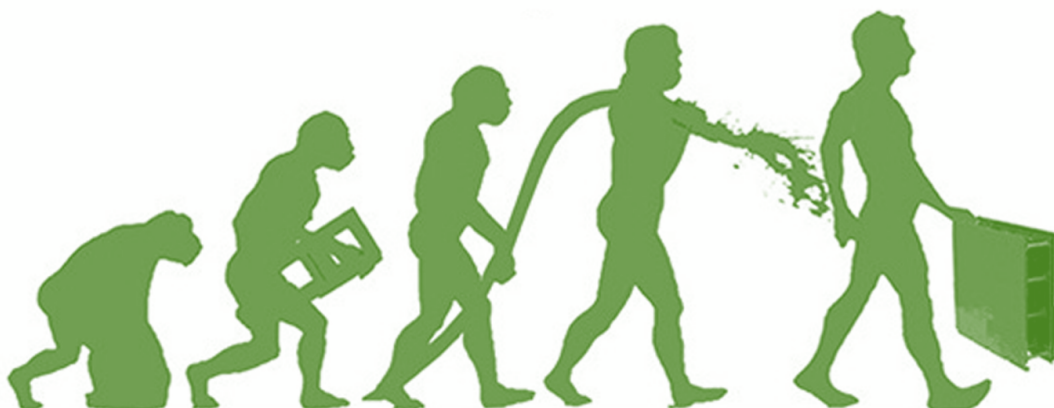
What is the SolidWall?

SolidWall offers you an innovative, lightweight, permanent shuttering and construction block system for walls and water features.

The UNIQUE system allows walls to be built quickly, without any specialist training making it ideal for anyone in a company to use.

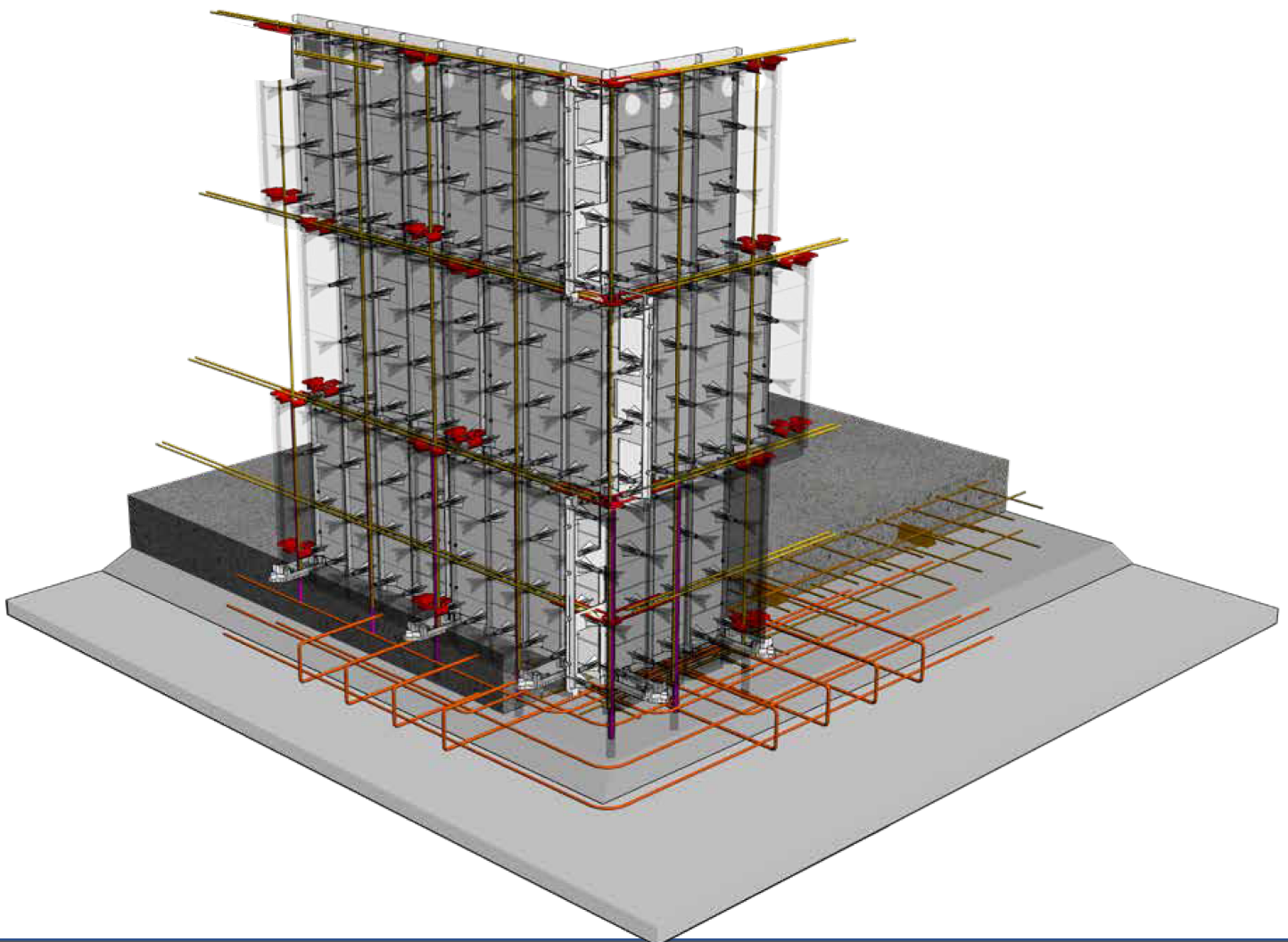
Used across the world for the last 15 years the SolidWall system is fast becoming the go to system for walls and water features replacing many traditional construction methods including Blockwork and Sleepers.

Available in both a straight Block or our unique Flex Block for free form walls and features.

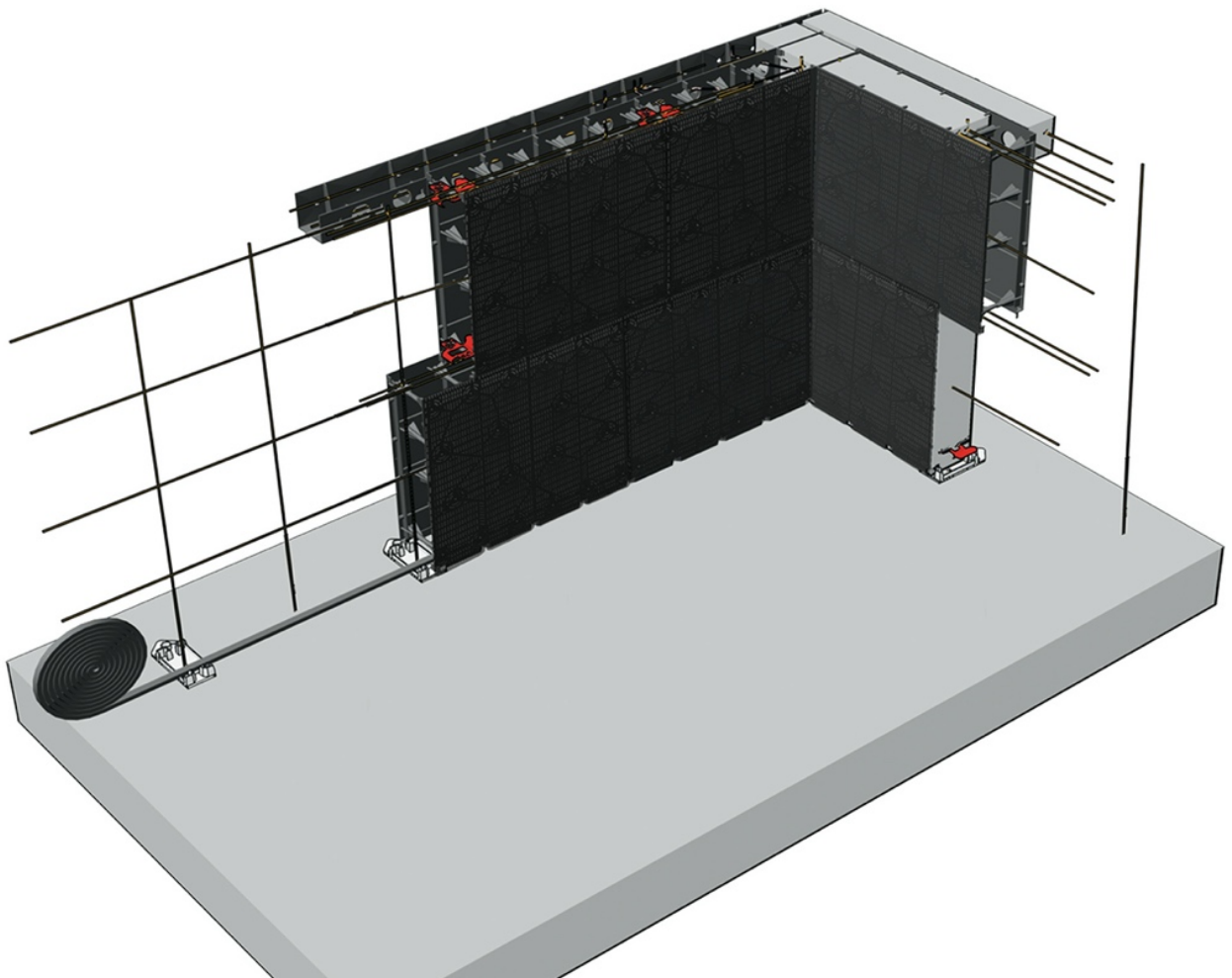


How the system works?

- The blocks are built off a traditional strip or raft footing.
- Blocks are clipped together using the two clips provided.
- No mortar is needed.
- Rebar is fixed horizontal and vertical as the wall is built.
- Starter bars can be set into footing or drilled and fixed.



- The courses slot into one another like Lego®.
- Once the wall is built it is filled with concrete. With either a concrete pump or by hand.
- The concrete weeps out of the perforated panel on the front of the block.
- The front of the block is then smoothed using a plastic float to finish.
- The wall can be cladded or rendered.





the end result is the same...

SolidWall can help you if you are one of these people.

- Looking for a lighter way to build
- Slowed down by weather, both Rain and Sun.
- Struggling to find skilled masons and renderers
- Working on Hard to access sites
- Tired of replacing rotten Sleepers
- Looking for a perfectly flat wall to Clad
- Looking to increase speed on site



Flexible SolidWall?

Our revolutionary flexible block makes curved walls effortless.

It opens a whole range of possibilities for designing and creating walls and water features in the garden.

Built off of a Slab or strip footing, the blocks are held in place using Soles, these are secured to the floor and position the blocks perfectly to create the desired shape.





12 Compelling Reasons Why You Should Use SolidWall:

1. SolidWall won't burst under the immense pressure of wet concrete . . . unlike traditional timber and metal shutters have been known to do.
2. Made polypropylene. It's an extremely durable material, using 100% recycled materials Known for its structural strength and lasting durability as well as for being a lightweight alternative to concrete blocks.
3. SolidWall are as easy as lego® to assemble thanks to its revolutionary design and unique clip locking system. Which means you can build walls very fast.
4. Can be built in all weather conditions which means it doesn't matter if it's pouring down with rain, even snowing, no need to walk off the pool job site. This ensures you can build your job on time without any disruptions or additional labour costs.
5. Creates a reinforced concrete wall which does not need rendering. Thanks to our tiled block's unique design.
Simply pump in wet concrete, even hand-fill the clip-blocks with concrete.
It leaves a perfectly flat finish, ready for the finish
6. Can be built to any shape thanks to our flexi-block. it can be bent into shape with your bare hands. Curves will be precise, smooth and no need to render because there will be no sharp edges. Curved Walls, ponds and water features could not be any easier.
7. Easy to cut with a simple pass through with a jigsaw. No need for a diamond tip blade. Leaves no dust. Much cleaner workmanship.
8. No need for any special skills which means no need to hire skilled tradesmen. Anyone with basic DIY skills can easily assemble a SolidWall
9. Due to SolidWalls size yet only weighing 3.5kgs each block it makes a hard job easier. It takes 6 concrete blocks, which weight 108kg to create the same area.
10. It's light weight construction means you or your workforce are not getting injured with heavy lifting like you would from concrete blocks.
11. SolidWall allows Walls and water features to be built even in the hardest access areas.
12. Walls and water features built using the SolidWall system result in the walls being reinforced concrete. Which we believe is the strongest option available.



Arbour Landscape Solutions Ltd

Office: 8 Markham Close, Borehamwood, Herts, WD6 4PQ

Tel: 0208 953 6177

Web: <https://www.arbourlandscapesolutions.co.uk>

Email: enquiries@arbourlandscapesolutions.co.uk